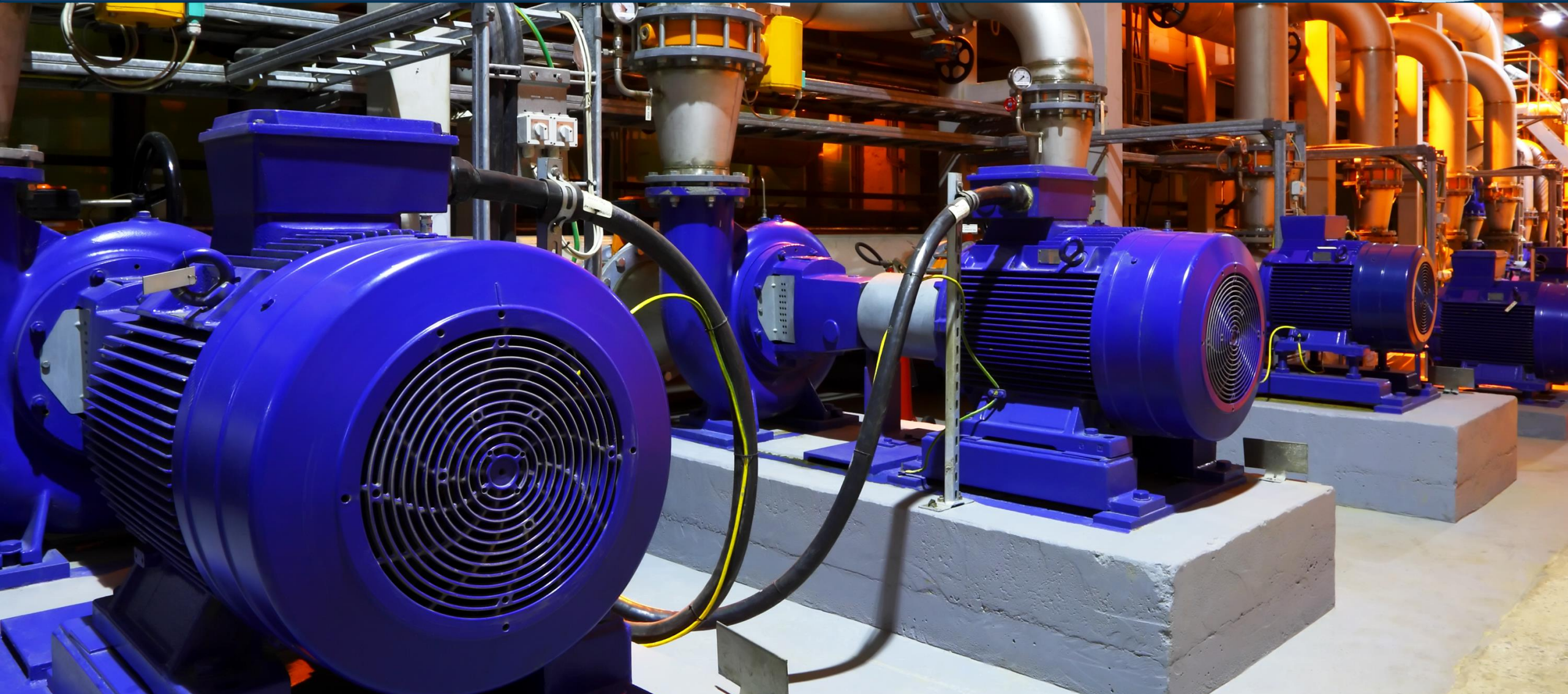
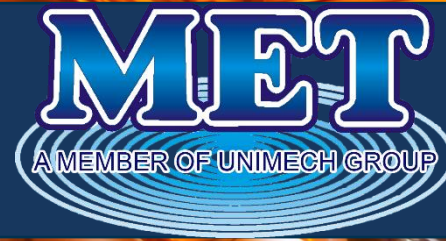
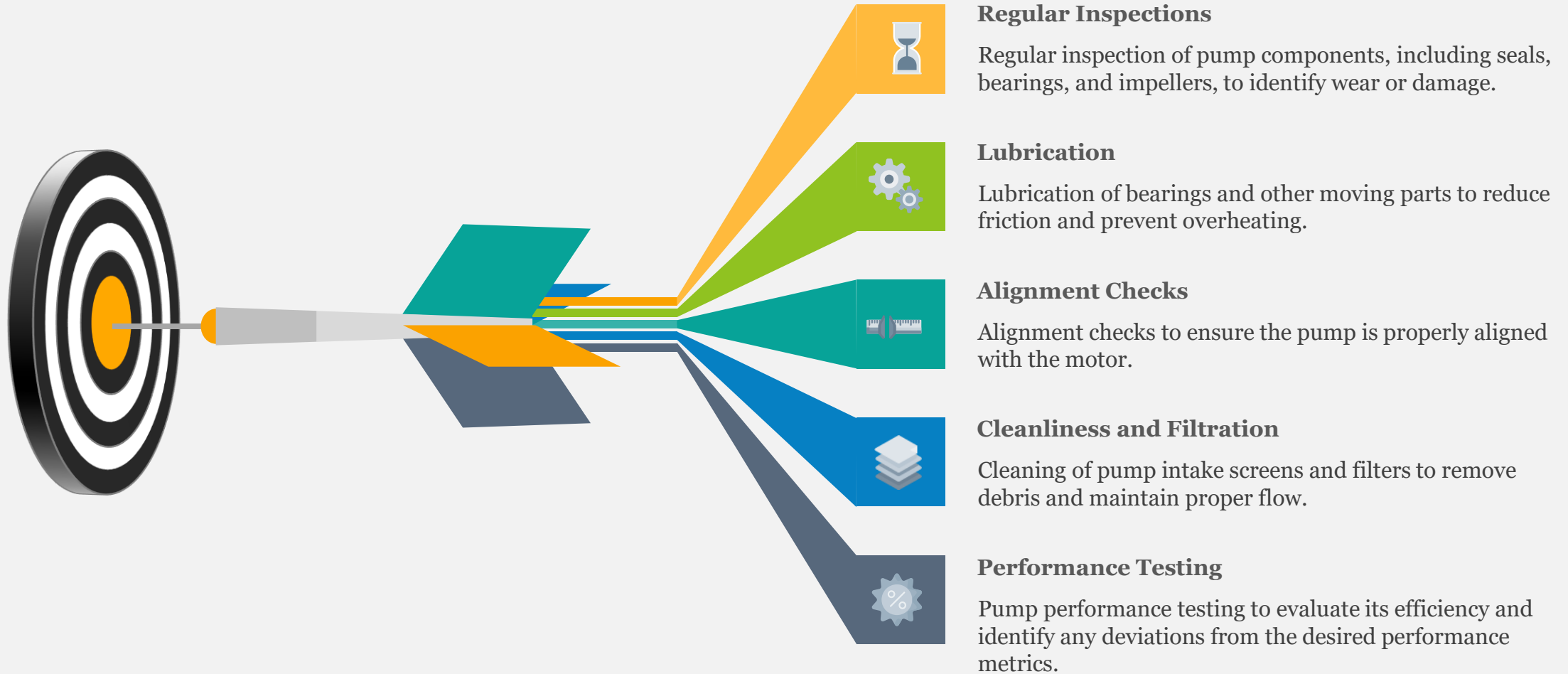


Pump Preventive Maintenance



Pump Preventive Maintenance

Essential Elements of Pump Preventive Maintenance: A Comprehensive Approach



Regular Inspections

Crucial for identifying potential issues early on and preventing major failures.



Regular inspections to identify any signs of wear, damage, or potential issues in the pump.



Components that should be inspected, such as seals, bearings, impellers, and motor connections.



Early detection prevent major failures and optimize pump performance.



Lubrication

Proper lubrication ensures smooth pump operation and reduces component wear.



Types of lubricants and recommended schedule.



Lubrication points: bearings, shafts, seals.



Correct lubrication techniques and appropriate amount of lubricant.



Alignment Checks

Regular alignment checks prevent stress and premature failure.



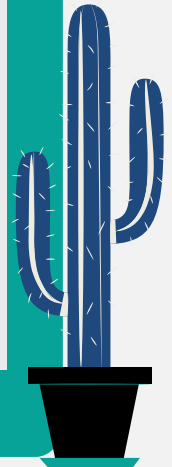
Vibration analysis techniques to detect misalignment, unbalanced impellers, and other problems



Alignment methods: laser alignment, dial indicators



Step-by-step alignment checks and properly documenting vibration readings.



Cleanliness and Filtration

Clean fluid and effective filtration systems are essential for pump performance



Filters help prevent solid particles or debris from entering the pump.



Monitor differential pressure - Cleaning intake screens, filters, and pump parts.



Best practices for filter cleaning and replacement - Establish a cleaning schedule.



Performance Testing

Evaluating pump performance through testing ensures optimal efficiency, identifies deviations, and enables proactive maintenance.



Parameters to measure: flow rates, pressures, power consumption, pump speed.



Benefits of performance testing: identifying deviations, troubleshooting, optimization.



Record-keeping and documentation.



Pump Preventive Maintenance

Safeguarding Pump Performance: The Power of Preventive Maintenance



GE Panametrics PT878:

- Clamp-on ultrasonic flow meter
- Measure a wide range of clean and dirty liquids
- Flow Range: -12.2 to 12.2 m/s (-40 to 40 ft/s)
- Pipe sizes: 2" to 300" (5 cm to 7.5 m) diameter
- High Accuracy:

Pipe ID > 6 in (150 mm) - $\pm 1\%$ to 2% of reading

Pipe ID < 6 in (150 mm) - $\pm 2\%$ to 5% of reading



• **Ultrasonic Flow Meter** •

Prüftechnik SHAFTALIGN Touch:

- Single-laser technology
- Active Situational Intelligence (ASI)
- Work faster without sacrificing precision
- Real-Time Measurement Quality Enhancement
- Up to 8 measurement points for more precise alignment of vertical machines
- High precision



• **Laser Alignment Systems** •

Lutron DT-2236:

- Combined Photo Tachometer RPM) and Contact Tachometer (RPM, m/min., ft/min.)
- Wide measuring range : 0.5 to 100,000 RPM
- High accurate measurement & fast sampling time with MICRO-COMPUTER LSI circuit & crystal time base
- Accuracy: $\pm (0.05\% + 1 \text{ digit})$



• **Digital Tachometer** •

UNI-T UT315A:

- Highly accurate and precise
- Measures acceleration, velocity, displacement
- Velocity (RMS) Accuracy: $\pm(5\%+0.02\text{cm/s})$



Vibration Tester

Kyoritsu Kew Snap 2017:

- Three functions in one unit; AC current, AC voltage and resistance
- Tear drop shaped jaws for ease of use in tight places and crowded cable areas
- Resistance range provides audible continuity test
- Frequency response from 40Hz to 1kHz on AC current and voltage ranges



• **Digital Clamp Meter** •

Kyoritsu 3005A:

- Perform insulation resistance measurements
- Continuity tests
- Bargraph to display insulation resistance
- 200mA continuity measuring current to IEC 61557
- Minimum 1mA current on insulation tests to IEC 61557



**DIGITAL INSULATION /
CONTINUITY TESTER**

Fluke:

- Precision thermometer
- High repeatability
- Quick response
- Long measuring distance
- Selectable MAX, MIN, DIF and AVG functions
- Laser targeting for use from -30 °C to 350 °C (-22 °F to 662 °F)



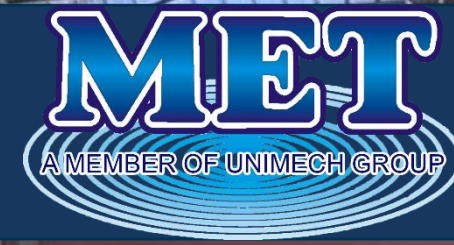
Infrared Thermometer

Pump Preventive Maintenance Schedule

SUN	MON	TUE	WED	THU	FRI	SAT
					1	2
3	4	5	6	7	8	9
10	11	12	13	14	15	16
17	18	19	20	21	22	23
24	25	26	27	28	29	30
31						

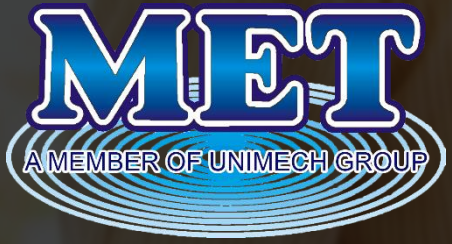


Our Service Team



Our Service Team





Contact Us

Smooth Operations Start Here: Expert Pump Services at Your Fingertips



Penang Office

No.1001, Jalan Bagan Lalang, 13400 Butterworth, Pulau Pinang.

Tel :+ 604-333 3130 (Hunting Line)



<https://www.met.com.my/>

Branches

Kedah Office

No. 31, Kompleks Perniagaan Gangsa, Jalan Gangsa 1, 05150 Alor Setar, Kedah.

Tel : + 604-731 1223 / 731 7223

Perak Office

144, Persiaran Klebang 1, Kawasan Perusahaan IGB, 31200 Ipoh, Perak.

Tel : + 605-291 8290 / 291 8490 / 291 1390

Selangor Office

No. 12G, Jalan Tandang, Seksyen 51, 46050 Petaling Jaya, Selangor.

Tel : + 603-7773 1788

Johor Office

No. 116 & 116-01, Jalan Ros Merah 2/17, Taman Johor Jaya, 81100 Johor Bahru, Johor.

Tel : + 607-353 4842

Kuala Lumpur Office

No. 12G, Jalan Tandang, Seksyen 51, 46050 Petaling Jaya, Selangor.

Tel : + 6012-494 2293 / +6012-477 3293

Pahang Office

152, Jalan Air Putih 4, Taman Megah Ria, 25300 Kuantan, Pahang

Tel : +609-568 0901